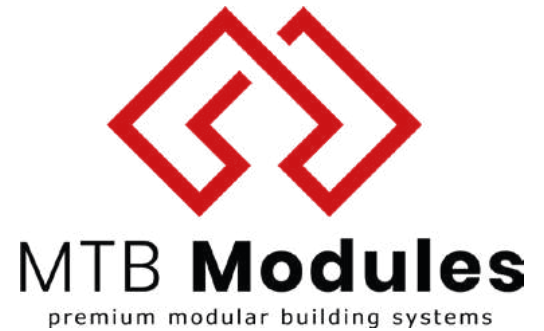


**Thank you  
for your interest  
of our offer!**



We would like to present you our offer to purchase of a modern, house **35 sqm** with a mezzanine - model **MTB ONE**.

The offer includes all elements prefabricated in our factory..

The assembly of the house is carried out using the attached instruction, in which we have described each stage of the work, step by step. Including the list of the materials needed at each of the stages.

The purchase includes all the materials for putting the house in a closed, unfinished state. From wall panels, foams, membranes to screws. We use for our houses only reputable companies such as:  
**Budmat, Swiss Krono, MTB Modules, Veka, Marcopol.**

All elements have been cut and numbered already at the production stage.

Our time spent in the factory on the prefabrication process reduces the scope of work, that has to be done during conventional construction method by more than 70% and it also reduces the costs by up to 65%.

Product accuracy in factory conditions, supervision of quality control at every stage of production, qualified staff and short time of order realization distinguishes our offer from the wide competition.

Experienced builders can build this house even in 6 days! Considering the already quick time of realization compared to traditional methods, people with basic construction knowledge can build it in 10-12 days.

The control of the outside teams by the investor is also easier, because every phase of construction is clearly described in the instruction.

Very important factors are: working time reduction, which is associated with constant increases remuneration of teams, lower power consumption, less noise during the work, waste reduction to a minimum and costs related to their disposal, no drying time for materials during construction (works are carried out dry), no need to insulate the building after erecting the walls (panels SIP have a 15 mm EPS core), reducing costs and the number of departures for missing items (everything is delivered at once) as well as reducing the amount of unnecessary purchased materials, the possibility of assembly at any time of the year and completion of the entire investment, with furniture in less than a month from the start of the work.



The interior design presented in the photo gallery is only a proposal and inspiration for a future customer. Our offer consists of a DIY house in state closed, unfinished. The building looks just like on the last photo.

The mezzanine takes up half of the area of the house. The height of the ridge pole is over 180 cm. The height under the mezzanine and in the toilet is 250 cm. It is ideal height and does not overwhelm as in case 220 cm.

Large, opening two skylight 68x118 cm let in enough sunlight. Windows are mounted on the expanding tape, not a foam like before. Window factor – 1,4W/sqm. Made of high-quality material.

The security door, ergonomically wide – 90 cm. Ensures comfortable use. Made of high-quality material. They are heavy and quiet. Core- 55mm

We do not use any „market materials” – in the cost of purchasing such door is more than 670 euros. We as a producer give this discount to our customer in the form of a good offer. The door also has vertical glazing and are mounted on the expanding tape, not a foam.

The balcony door, open/tilt, 240 H x 250 W with an opening wing 80 cm wide and permanent site. Windows are double-glazed, PCV, outside in anthracite color and inside in white. Window factor – 1,29 W/sqm

The bathroom window 122 H x 62 W open/tilt, double-glazed, PCV, outside in anthracite color and inside in white. Mounted also on the expanding tape.

The construction of the house based on branded wood, certified C24 -Scandinavian wood, which does not need impregnation (humidity around 18%).

SIP panels as elements of walls, external walls, partition walls, mezzanine floor and roof.

Windproof membranes for elevation, facade laths, modern roof type membrane “Pasta” (under the seam sheet). A set of screws (all Torx type) – certified.

The routing foams and branded foam gun, waterproofing to protect the bottom of the wall external, polystyrene grater – needed occasionally to correct the material allowance and during occurrence of non-standard modifications for example : installation of an additional window (this stage of work only on your own range). “Taker” type staples – membrane fastening. Mineral wool strip needed to seal the ridge. Fundamental foil 30 cm wide for foundation.



Elevation boards and roof soffit – pine, around 14 cm wide which do not require sanding (it is enough to tint with the impregnation in the selected color). Boards mounded with “Torx” screws. Dry material (humidity around **18%**).

Modern seam plate roofing made by brand Budmat. It is a leading manufacturer of roofing plates and more. Color of the roofing RAL 7016 – anthracite MATT. The assembly of the roofing with the use of “farmer” fasteners is carried out in invisible places (under the sheet overlap).

### **Plate model – Iron Click**

The latest system on the market, that is easy to install

The facade plate is the same model described above.

Flaps and other flashing are also in the same color RAL 7016 - anthracite MATT (as above).

The outer surface of the building wall is covered with 10 cm thick polystyrene. The set also includes a mesh and glue. On the customer’s side, all that remains is the choice and purchase of plaster, according to their preferences.

Each element from wall panels to screws, foam and tiny staples have own unique code, which is assigned to each assembly stage.

We transport houses to anywhere in the world (anywhere where it is possible). The cost of transport is calculated individually. Self-pickup is also possible.

Warranty for the set – 3 years.

At this moment, the order fulfillment time is 28 days long from signing the contract. We start realization by an advance payment - 40% of the order value. The payment of the rest amount (60%) takes place within three days before the departure from our factory or self-pickup. You will need three people to unload the elements. The drivers only help with unloading.

The heaviest elements of the set are maximum 70kg

----

The external pergola visible in the visualizations is the only element that is an additional option. Not included in the price.



### The pergola set includes:

- construction beams,  
(To be colored/impregnated on your own)  
Impregnates for your own purchase locally, adapted to the local climate. The beams are cut and drilled.
- U-type anchors, painted black matt, powder paint,
- „X” wall braces/fasteners, discreet fasteners between the spans, painted black matt, powder paint, solid, steel, - A set of fasteners – mounting screws, color – black,
- assembly instruction.

----

### External dimensions of the house (total):

width: 4,94m  
length: 6,91m  
height: 4,92m  
roof angle: 18 degrees

### Insulation layer:

15 cm –EPS 80

Parameter: U 0,23

It is possible to insulate the external walls with double layer wool 3,5 cm.

By using external thermal insulation (in the grate under the facade), we obtain the wall parameter of U 0,18, however on the roof U 0,15.

We recommended a foundation slab as a foundation (we send the project by e-mail)

**Thank you for your interest and time.**

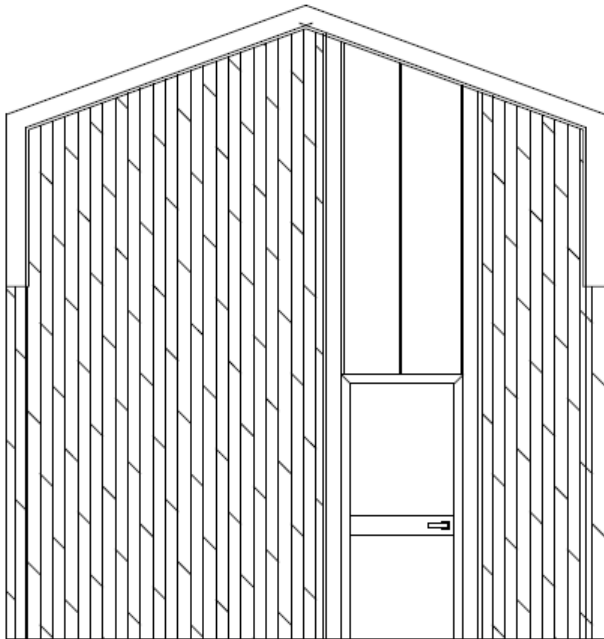
**Contact us and visit our company in Chojnice 89-600, Poland.**

**We have demo models on site.**

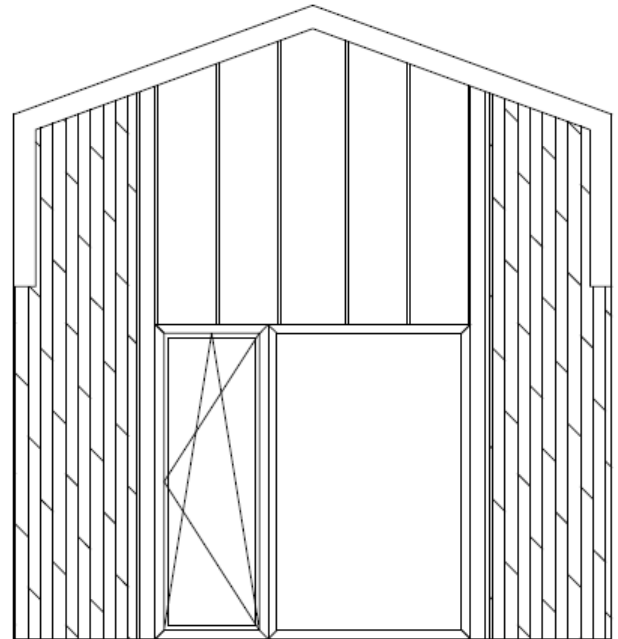


## Elevation front/back view

*Front elevation*

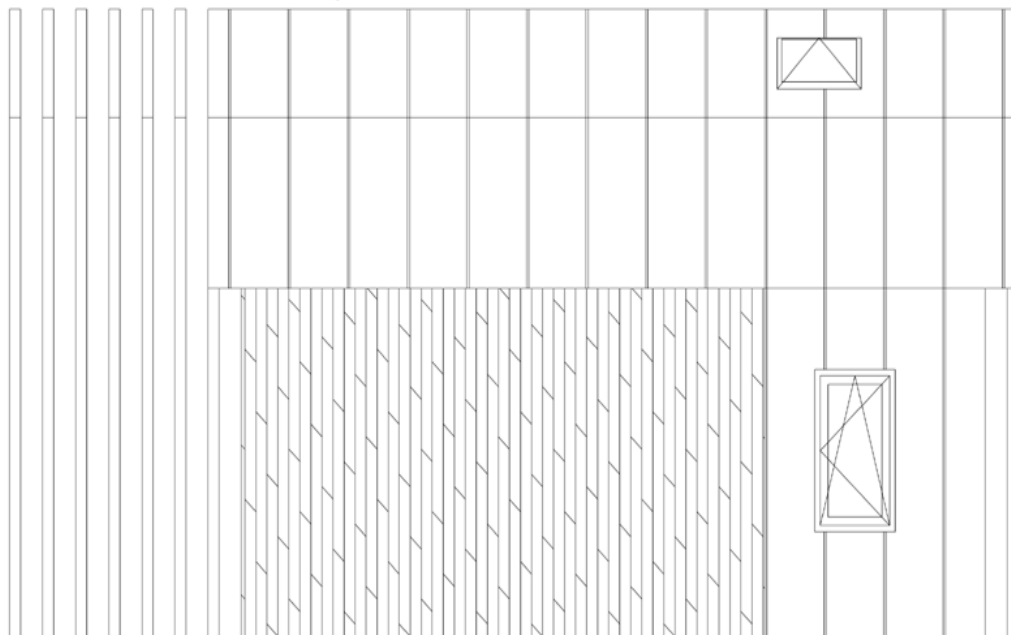


*Terrace elevation*



## Elevation - side view

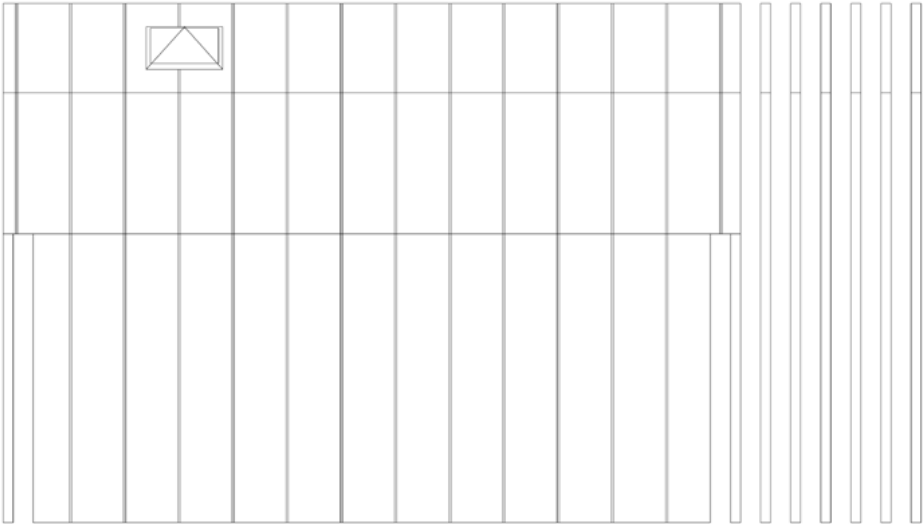
*Elewacja boczna*



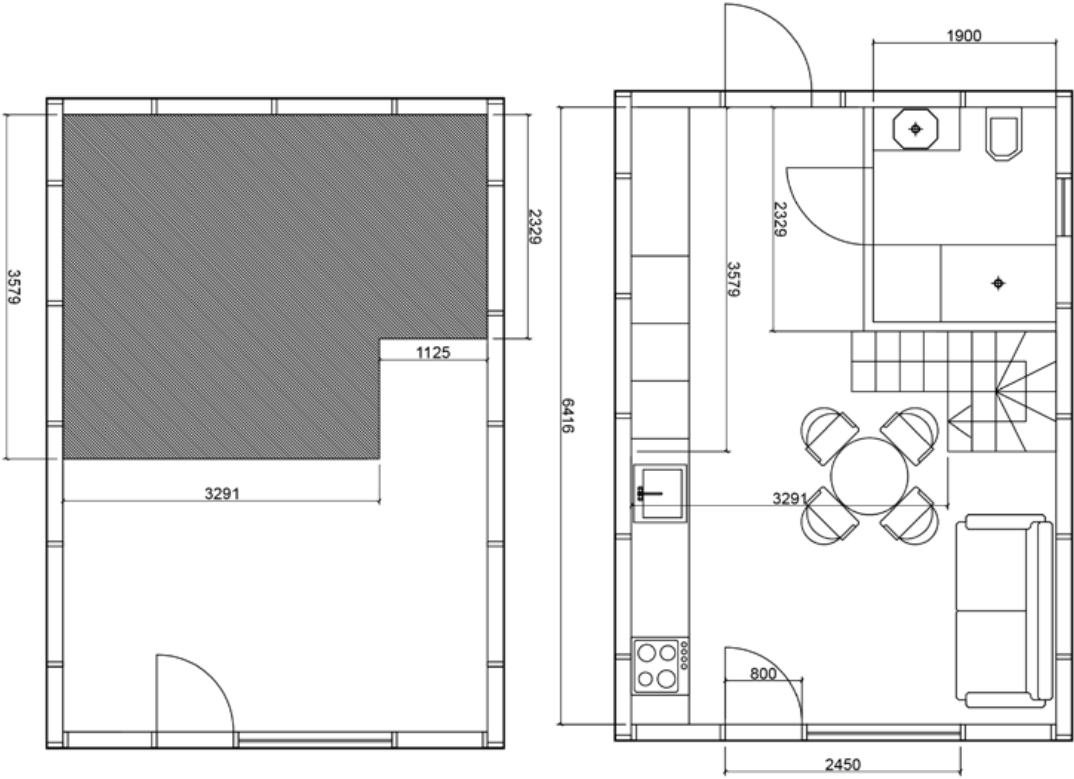


# Elevation - side view

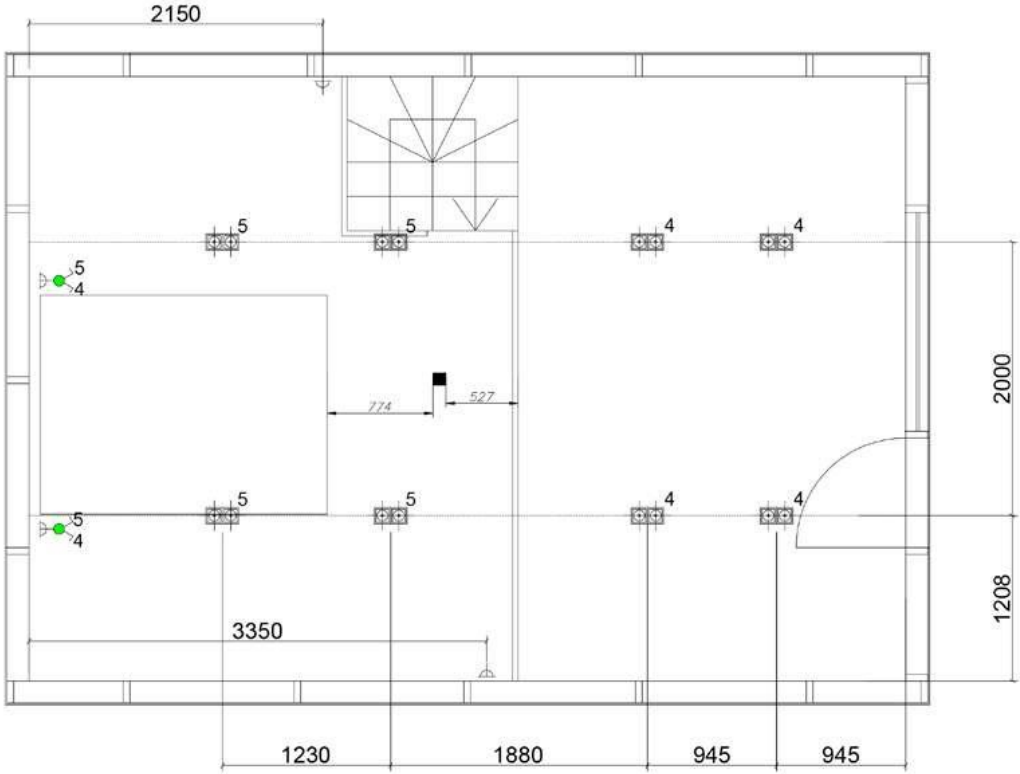
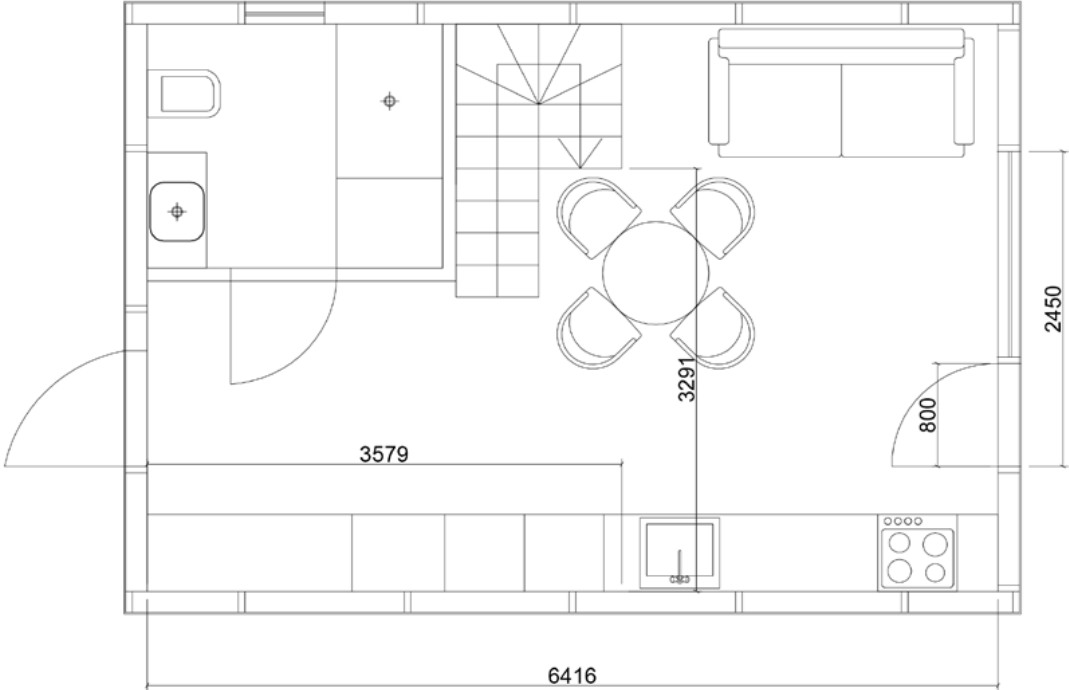
*Elewacja boczna*



# House dimensions



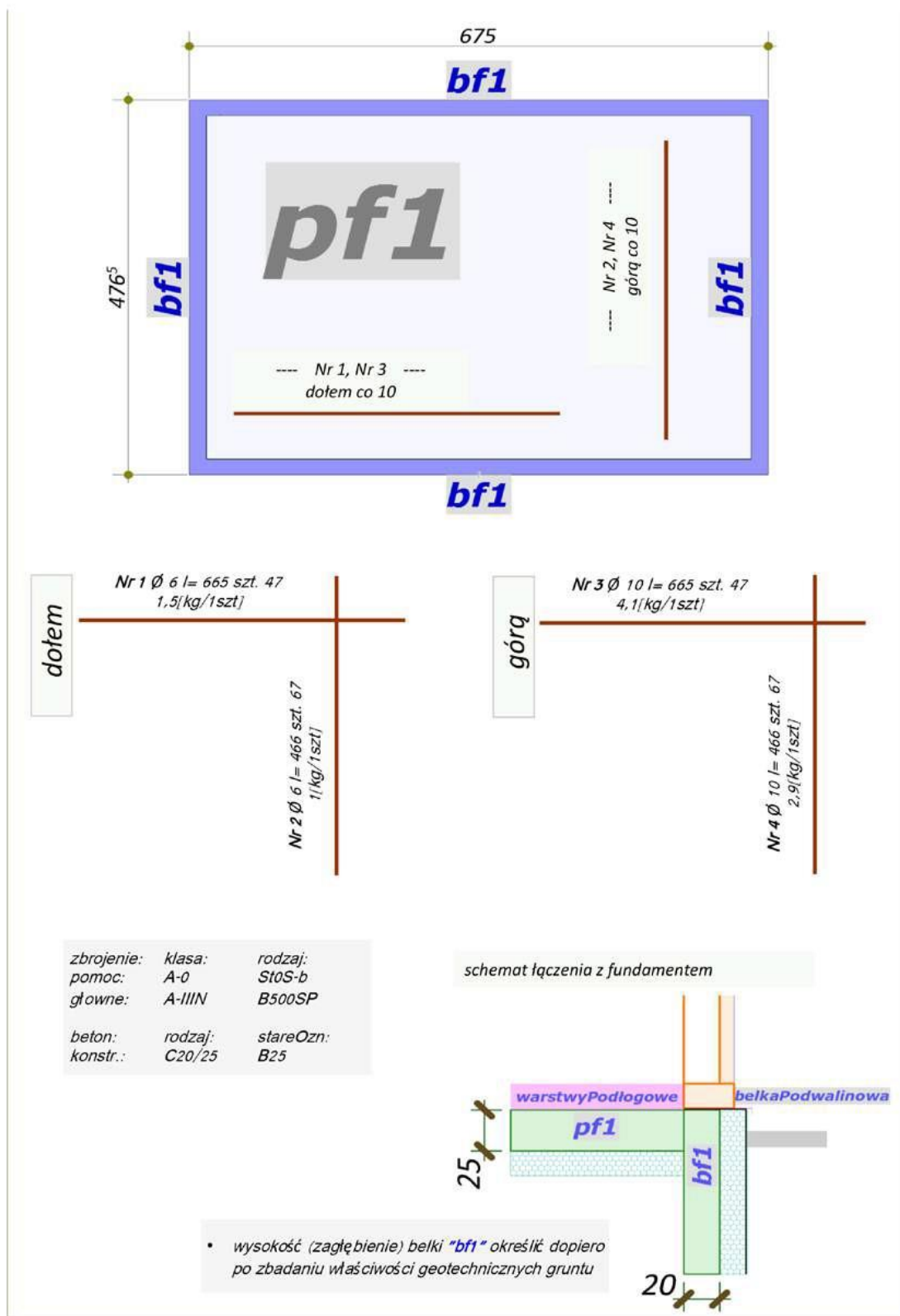
# House plans








# The foundation plate





# MTB Modules

premium modular building systems

**Model**

**MTB ONE**

<b>The building area</b>	<b>35sqm</b>
<b>Usable area</b>	<b>42,8sqm</b>
<b>Roof angle</b>	<b>18deg.</b>
<b>Roof area</b>	<b>37,5sqm</b>
<b>Height under the mezzanine</b>	<b>2,5m</b>
<b>Height at the ridge</b>	<b>5m</b>
<b>Weight of the set</b>	<b>7000kg</b>

<b>Equipment</b>	<b>Qty.</b>	<b>Dimensions</b>
<b>Skylights</b>	<b>2</b>	<b>68x118</b>
<b>Front door</b>	<b>1</b>	<b>90</b>
<b>Balcony door</b>	<b>1</b>	<b>240x250</b>
<b>Bathroom window</b>	<b>1</b>	<b>122x62</b>



[MTBmodules.com](http://MTBmodules.com)



**MTB Modules**  
premium modular building systems

## MTB ONE

<b>Mounting provision:</b>	<b>Qty.</b>
<b>Polyestyrene grater</b>	<b>1</b>
<b>Membrane</b>	<b>2rolls</b>
<b>Stapler &amp; staples</b>	<b>1set</b>
<b>Mounting foam</b>	<b>12</b>
<b>Gun to foam</b>	<b>1</b>
<b>Roofing silicone</b>	<b>2</b>
<b>Expansion tape</b>	<b>3</b>
<b>Roof membrane</b>	<b>1set</b>
<b>Dysperbit</b>	<b>1</b>

### Building kit MTB ONE

**Panels SIP (12mm OSB3x150mm polysterynex12mmOSB3)**

**Construction timber**

**Set of screws**

**Set of flashings**

**Set of facade boards**

**Set of boards for elevation**





# MTB Modules

premium modular building systems

„MTB” MARIUSZ FIEREK, TOMASZ FIEREK, BARTOSZ TRACZ s.c.

CZŁUCHOWSKA 66  
89-600 CHOJNICE  
NIP: 555-211-18-98

Bank account: Alior Bank 84 2490 0005 0000 4500 9410 2349

