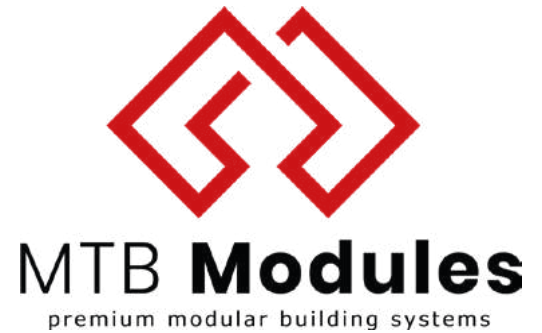


**Thank you
for your interest
of our offer!**



We would like to present you our offer to purchase of a modern, **two-story house MTB SEVEN- with a total area of 120 sqm.**

The offer includes all elements prefabricated in our factory.

The assembly of house is carried out using the attached instruction, in which we have described each stage of the work step by step. Including the list of the materials needed at each of the stages.

The purchase includes all the materials for putting the house in closed, unfinished state. From wall panels, foams, membranes to screws. We use for our houses only reputable companies such as: **Budmat, Swiss Krono, MTB Modules, Veka, Marcopol.**

All elements have been cut and numbered already at the production stage.

Our time spent in the factory on the prefabrication process reduces the scope of work, that has to be done during conventional construction method by more than 70% and it also reduces costs by up 65%.

Production accuracy in factory conditions, supervision of quality control at every stage of production, qualified staff and short time of order realization distinguishes our offer from the. Wide competition.

Considering the already quick time of realization compared to traditional methods, experienced builders can build this house in 21-26 days.

The control of the outside teams by the investor is also easier because every phase of construction is clearly described in the instruction.

Very important factors are: working time reduction, which is associated with constant increases remuneration of teams, lower power consumption, less noise during the work, waste reduction to a minimum and costs related to their disposal, no drying time for materials during construction (works are carried out dry), no need to insulate the building after erecting the walls (panels SIP have a 15 cm EPS core), reducing costs and the number of departures for missing items (everything delivered at once) as well as reducing the amount of unnecessary purchased materials, the possibility of assembly at any time of the year and completion of the entire investment, with furniture in less than a month from the start of the work.



The interior design presented in the photo gallery is only a proposal and inspiration for a future customer. Our offer consists of a DIY house in state closed, unfinished.

This allows for any interior arrangement, as well as successive finishing work. Works such as electrical, hydraulic and mechanical ventilation installations are responsibility of the client.

The height of the ridge pole is over 395 cm. The height on the ground floor is 250 cm. It is ideal height and does not overwhelm as in case 220 cm.

Three, opening skylights 68x118 cm let in enough sunlight. Windows are triple-glazed. Mounted on the expanding tape, not a foam like before.

Window factor - 0,90W/sqm.

Two gable windows 204x109 - triple-glazed, PCV, color anthracite outside/ white inside. Mounted on the expanding tape, not a foam like before.

Window factor: 0,86w/sqm.

Two gable windows 328x109- triple-glazed, PCV, color anthracite outside/ white inside. Mounted on the expanding tape, not a foam like before.

Window factor: 0,88w/sqm.

Window 206x110 - triple-glazed, PCV, color anthracite outside/ white inside. Mounted on the expanding tape, not a foam like before.

Window factor: 0,86w/sqm.

Three windows 220 x 109, triple-glazed, PCV, color anthracite outside/ white inside. Mounted on the expanding tape, not a foam like before.

Window factor: 0,80w/sqm.

The balcony door, open/tilt, 220x109, triple-glazed, PCV, color anthracite outside/ white inside. Mounted on the expanding tape, not a foam like before.

Window factor: 0,87w/sqm.

Two windows 208 height. x 100 width, open/tilt, triple-glazed, PCV, color anthracite outside/ white inside. Mounted on the expanding tape, not a foam like before.

Window factor: 1,37w/sqm.

The bathroom window 117 height. x 60 width., open/tilt, triple-glazed, PCV, color anthracite outside/ white inside. Mounted on the expanding tape, not a foam like before.

Window factor: 1,1 w/sqm.

The construction of the house based on branded wood, certified C24 - Scandinavian wood, which does not need impregnation (humidity around 18%).

Panels SIP as elements of walls, external walls, partition walls, floor and roof.

Windproof membranes for elevation, facade laths, modern roof type membrane "Pasta" (under the seam sheet). A set of screws (all Torx type) - certified.



The routing foams and branded foam gun, waterproofing to protect the bottom of the wall external, polystyrene grater - needed occasionally to correct the material allowance and during occurrence of non-standard modifications for example: installation of an additional window (this stage of work only on your own range). "Taker" type staples - membrane fastening. Mineral wool strip needed to seal the ridge. Fundamental foil 30 cm wide for foundation.

The security door, ergonomically wide - 90 cm. Ensures comfortable use. Made of high-quality material. They are heavy and quiet.
Core – 55mm.

We do not use any „market materials” - the cost of such doors is more than 670 euros. We as a producer give this discount to our customer in the form of a good offer. The door has also vertical glazing and are mounted on the expanding tape, not a foam.

Elevation boards and roof soffit - pine, around 12 cm wide, which do not require sanding (it is enough to tint with the impregnation in the selected color). Boards mounted with "Torx" screws. Dry material (humidity around **18%**).

Modern seam plate roofing made by brand Budmat.

It is a leading manufacturer of roofing plates and more. Color of the roofing RAL 7016 – anthracite matt.

The assembly of the roofing with the use of „farmer” fasteners is carried out in invisible places (under the sheet overlap).

Plate model - Iron Click

The latest system on the market, that is easy to install.

The facade plate is the same model described above - without exception. All elements are prefabricated to the size.

Flaps and other flashings are also in the same color RAL 7016 – anthracite matt (as above).

Each element from wall panels to screws, foam and tiny staples have own unique code, which is assigned to each assembly stage.

We transport to anywhere in the world (anywhere where it is possible). The cost of transport is calculated individually.

Warranty for the set - 3 years.



At this moment, the order fulfillment time is 60days long from signing the contract. We start realization by an advance payment - 40% of the order value. The payment of the rest (60%) takes place within three days before the departure from our factory or self-pickup. You will need three people to unload the elements. The driver only help with unloading.

The heaviest elements of the set are maximum 200 kg.

External dimensions of the house :

width: 6,3m

length 10,8m

height: 7,13m

roof angle: 45 degrees

Insulation layer :

15 cm –EPS 80

3,5 cm – mineral wool

Parameter U 0,18

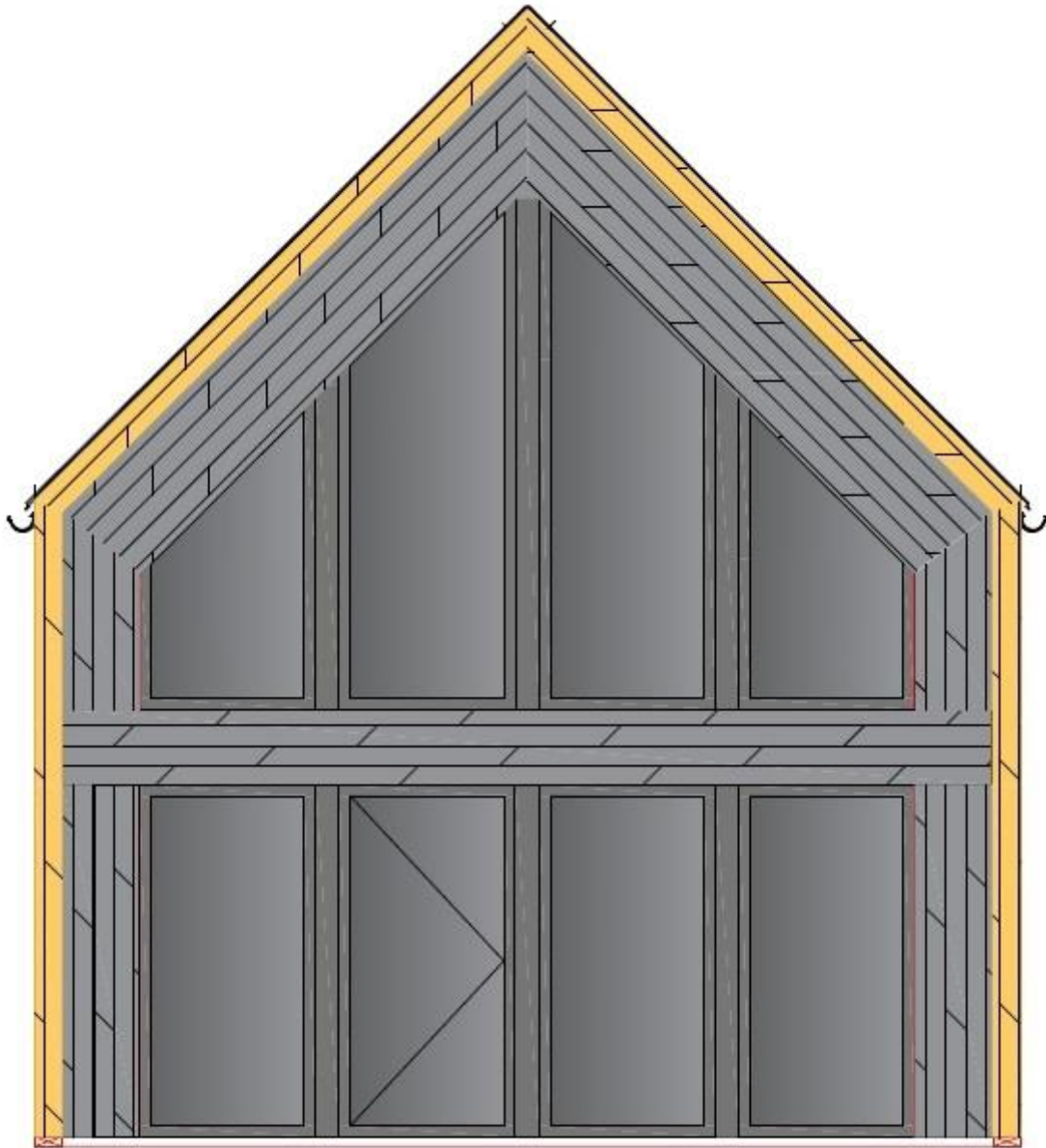
Thank you for your interest and time.

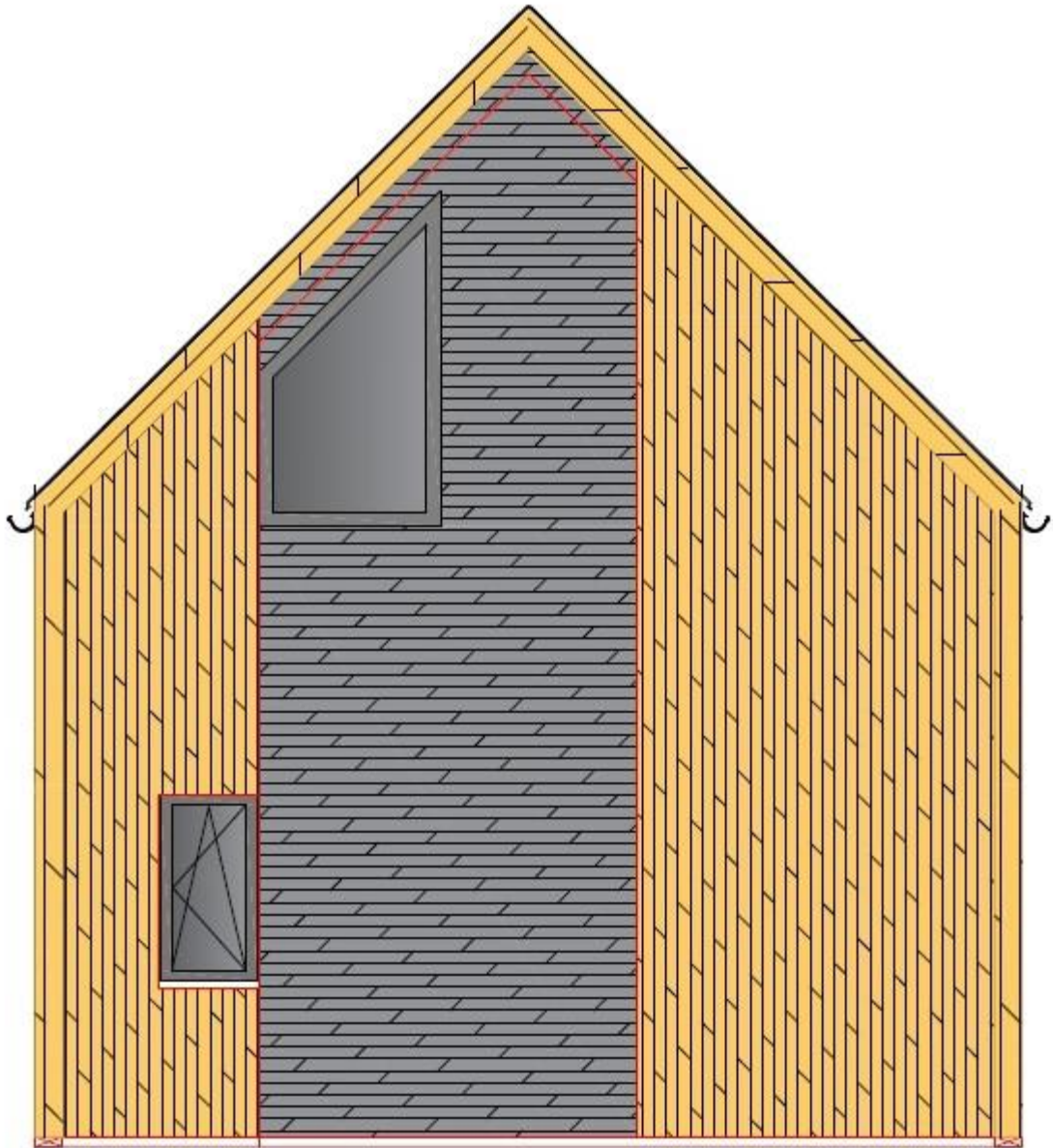
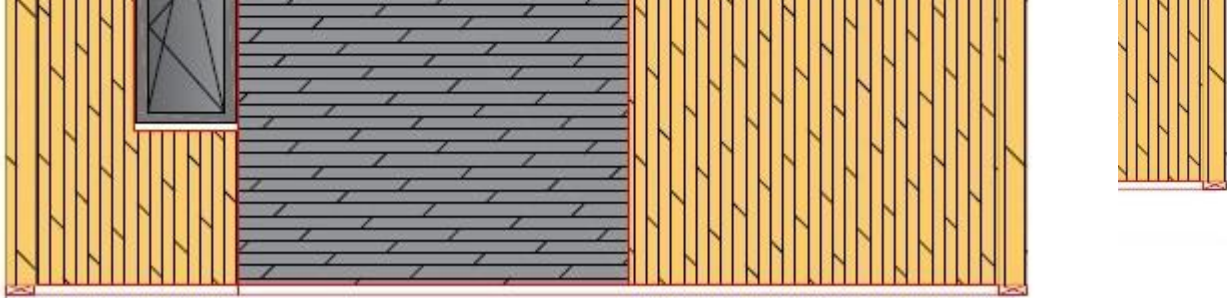
Contact us and visit our company in Chojnice 89-600, Poland.

We have demo models on site.

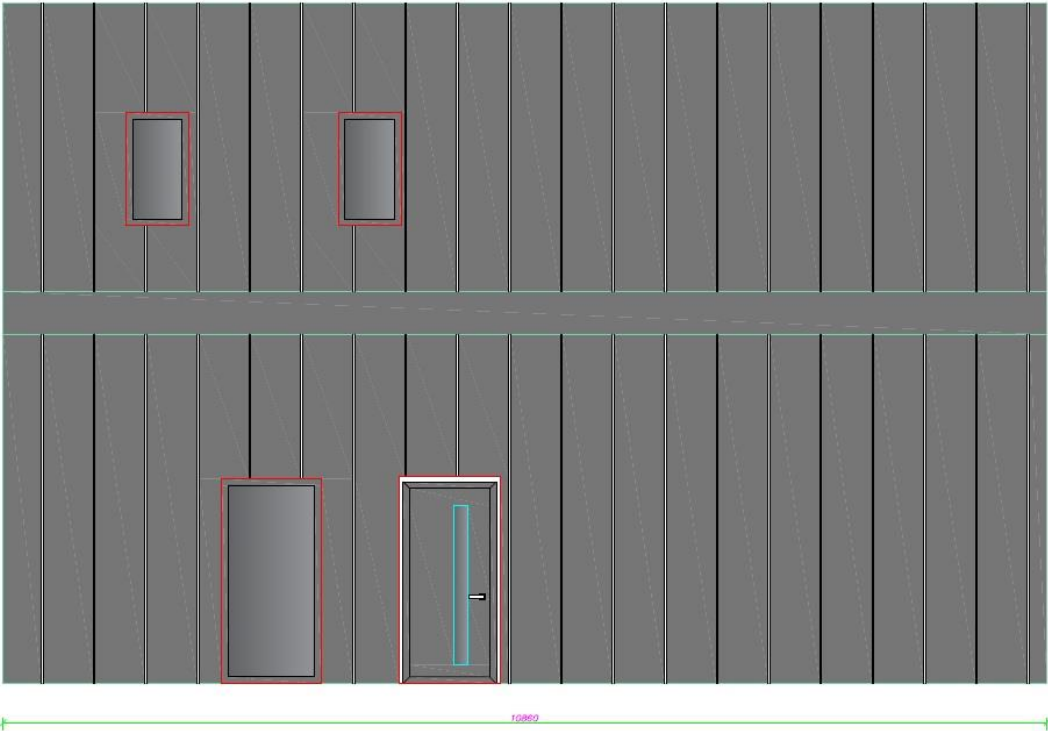
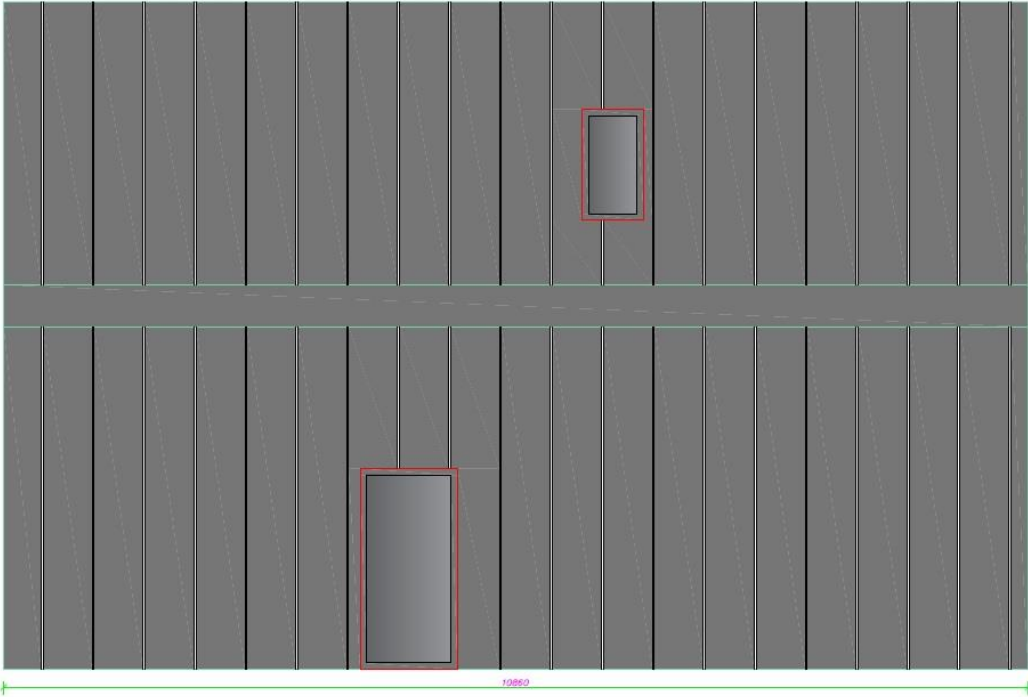


Elevation – front view

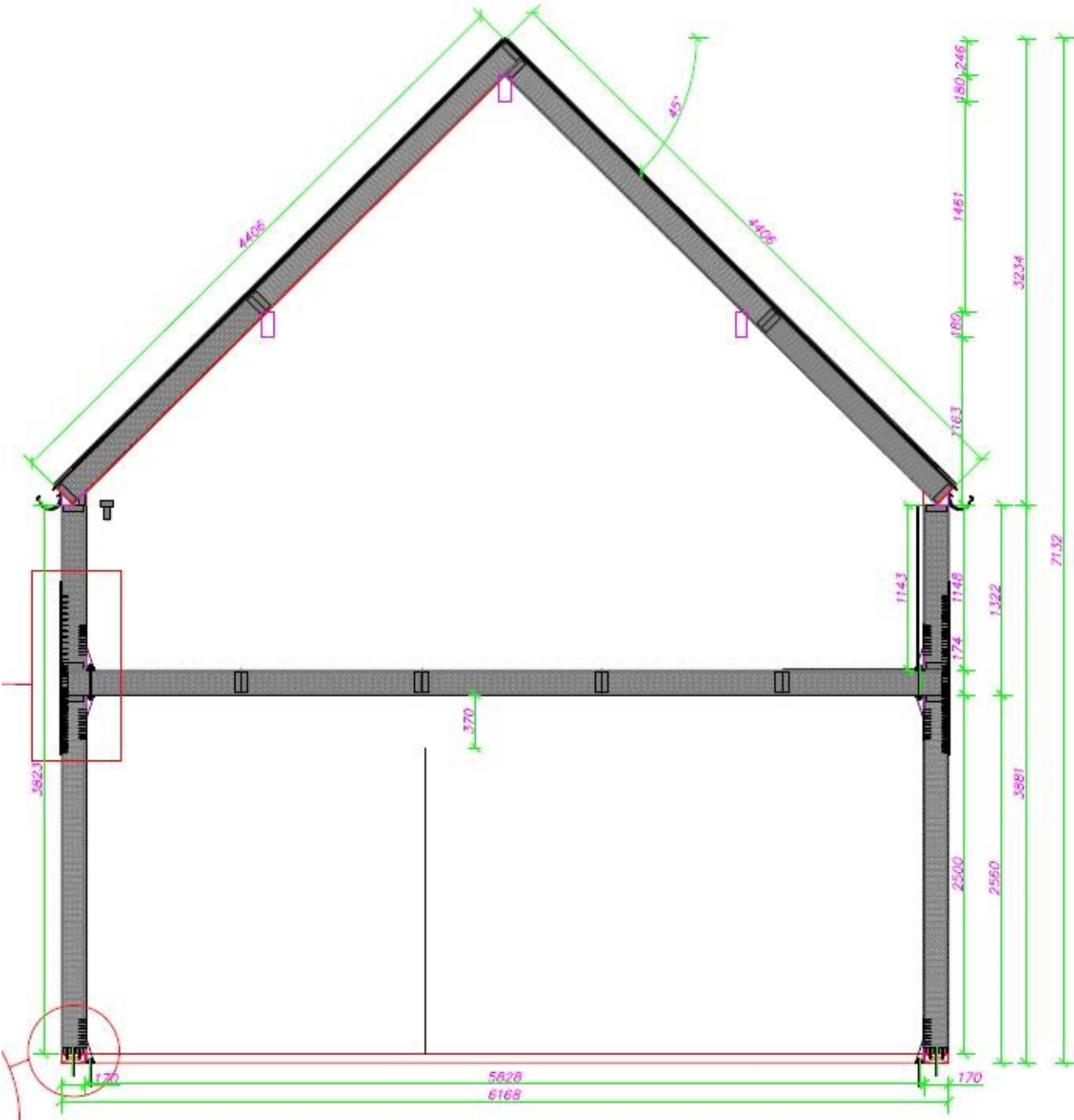




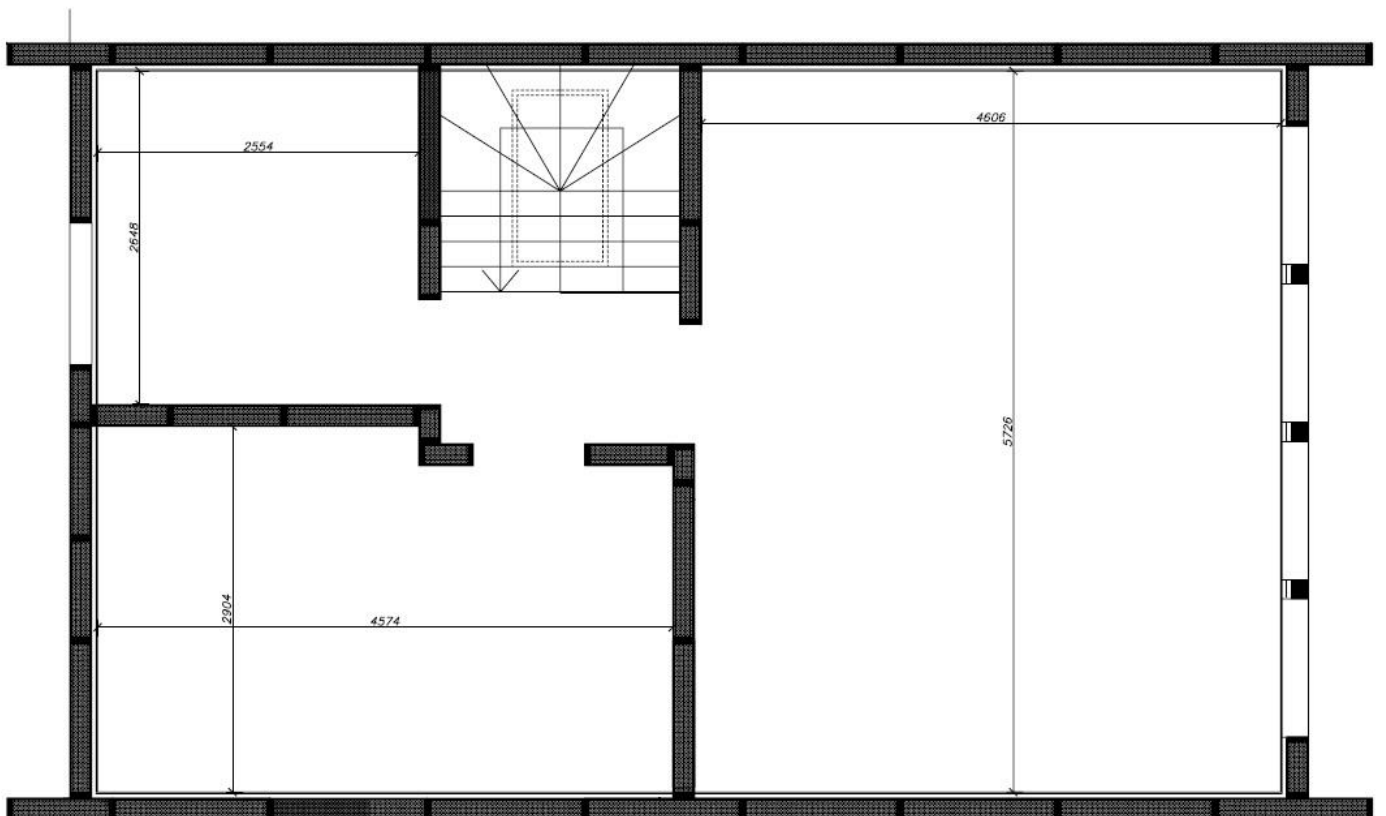
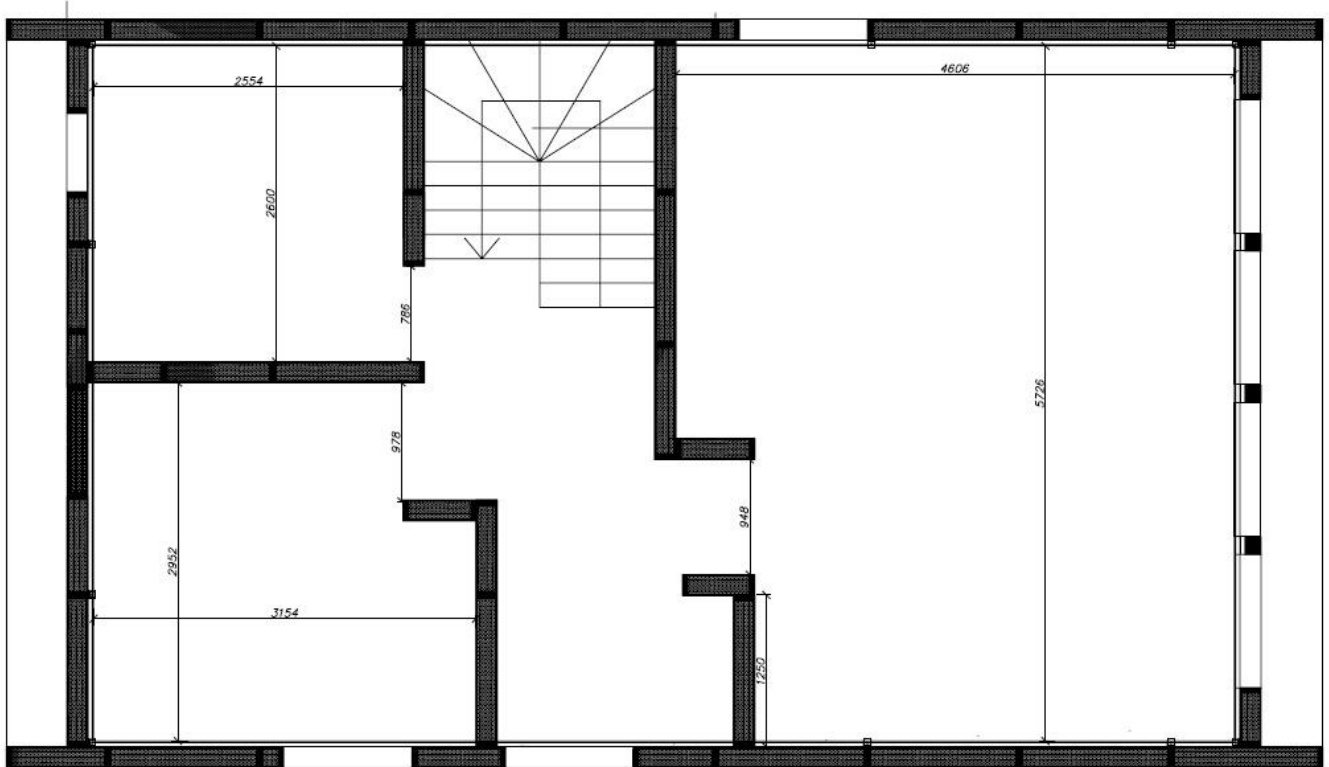
Elevation – side view




Dimensions



House plan





MTB Modules

premium modular building systems

Model

MTB SEVEN

The building area	67 sqm
Usable area	93 sqm
Roof angle	45deg.
Roof area	96sqm
Height on the ground floor	2,50m
Height at the ridge	7,13m
Weight of the set	20000kg

Equipment	Qty.	Dimensions
Skylights	3	68x118
The balcony windows	3	220x109
The bathroom window	1	117x60
The gable windows	2	204x109
The gable windows	2	328x109
Windows on the ground floor	2	208x100
The gable window	1	206x110
The balcony door	1	220x109





MTB Modules
premium modular building systems

MTB SEVEN

Mounting elements	Qty.
Polystyrene grater	1
Membrane	2rolls
Stapler and staples	1 set
Mounting foam	12
Gun to foam	1
Roofing silicone	2
Expansion tape	3
Roof membrane	1set
Dysperbit	1

Building kit MTB SEVEN

Panels SIP (12mm OSB3x150mm styrofoamx12mmOSB3)

Construction timber

Set of screws

Set of flashings

Set of facade sheets

Set of façade boards

Set of boards for elevation





MTB **Modules**

premium modular building systems

„MTB” MARIUSZ FIEREK, TOMASZ FIEREK, BARTOSZ TRACZ s.c.

CZŁUCHOWSKA 66
89-600 CHOJNICE
NIP: 555-211-18-98

Bank account: Alior Bank 84 2490 0005 0000 4500 9410 2349